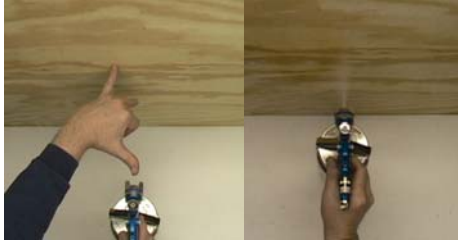


BASIC GUN TECHNIQUES
Simple techniques that will make a big difference in the quality of your work



Gun should be 6" to 8" from the target and held perpendicular to the surface being sprayed

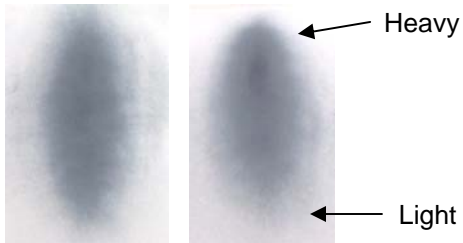


Too Close - Running & Sagging

Too Far - Dry Spray



Tipping the gun results in more finish at the bottom of the pattern than at the top

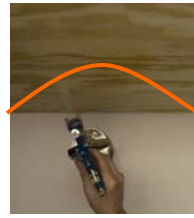


Correct

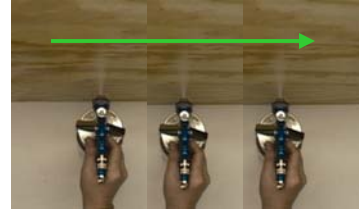
Tipped

Heavy

Light



Don't arc the gun as you spray. The travel of the gun should stay parallel to the target's surface at all times.



Overlap each stroke by 50%

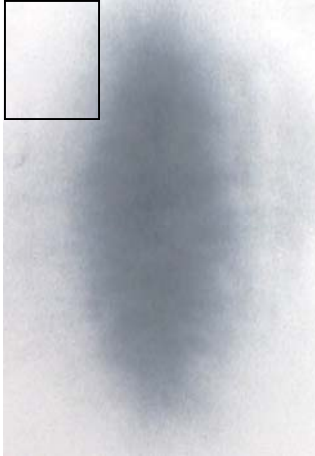


As you spray advance towards the booth so that overspray falls on unfinished surfaces.



Do not spray directly into a corner, work outward from corner





When setting up your spraygun as you adjust your air and material flow aim the gun at a piece of white paper and spray a very quick burst. See picture on the left. Look at the pattern. Is it the correct size? Is the material distributed uniformly? If the center has a distinct wet spot then you may need to add a little atomizing air or cut back on the material flow a little.



The picture on the right is a close-up of the boxed in area of the picture on the left. See how uniform the dots of color are and how evenly distributed? That is the sign of a high quality spraygun.

TROUBLESHOOTING YOUR SPRAY PATTERN



Round spray uneven
Middle air cap air passage dirty or deformed
Clean thoroughly or replace nozzle set if required.



Sickle spray pattern
Air cap horn dirty or damaged.
Clean horn air passages or replace nozzle set.



Deformed spray pattern on one side
Clean nozzle with special cleaning kit or replace nozzle set.



Split fan
Too much thinner in material.
Spray pressure too high.



Material deposit too heavy in fan pattern
Atomization pressure too low- increase air pressure.
Viscosity too high-add thinner.
Too much material- use smaller nozzle set.



Irregular or fluttering fan pattern
Fluid tip or needle loose- tighten parts.
Paint cup plugged- clean air vent hole.
Hole in material pick up tube- replace part.